

# The Knowl Charnock Grove

2-bedroom home, sleeps 4



2 | 

1 | 

1 | 



Artist's impression

## Key features

- Two double bedrooms
- Downstairs W.C.
- Open plan kitchen and dining room
- Separate living room
- Driveway parking

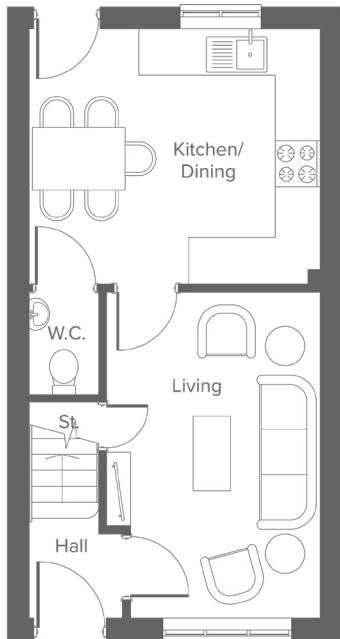


**The Knowl**  
Available plots  
34 or 36

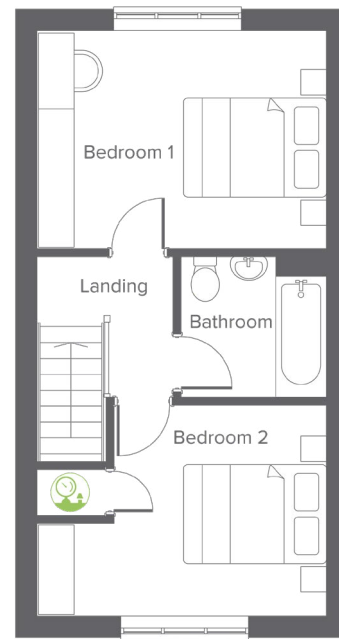
**Charter Lane, Charnock Richard, PR7 5LZ**  
A collection of 76 beautifully designed new homes

# The Knowl Charnock Grove

2-bedroom home, sleeps 4



**Ground floor**



**First floor**

Ground Floor	Metric	Imperial
Kitchen/Dining	4.09 x 3.57	13'5" x 11'8"
Living	3.00 x 4.56	9'10" x 14'11"
W.C.	0.98 x 1.44	3'2" x 4'8"

First Floor	Metric	Imperial
Bedroom 1	4.09 x 3.06	13'5" x 10'0"
Bedroom 2	4.09 x 2.97	13'5" x 9'8"
Bathroom	2.04 x 1.99	6'8" x 6'6"

 Room for Air source heat pump/water tank

Total size **69.7m<sup>2</sup> / 750.7ft<sup>2</sup>**

## Get in touch

 01257 650614

 [yourhousinggroup.co.uk](https://www.yourhousinggroup.co.uk)

 @yourhousing

 yourhousinggroup