

The Knowl Century Mill



2-bedroom home, sleeps 4

2 | 

1 | 

1 | 



Artist's impression

Key features

- Two double bedrooms
- Downstairs W.C.
- Open plan kitchen and dining room
- Separate living room
- Driveway parking



The Knowl

Available plots

61, 64, 65, 66, 67,
74, 75, 76, 77, 82,
83 or 84

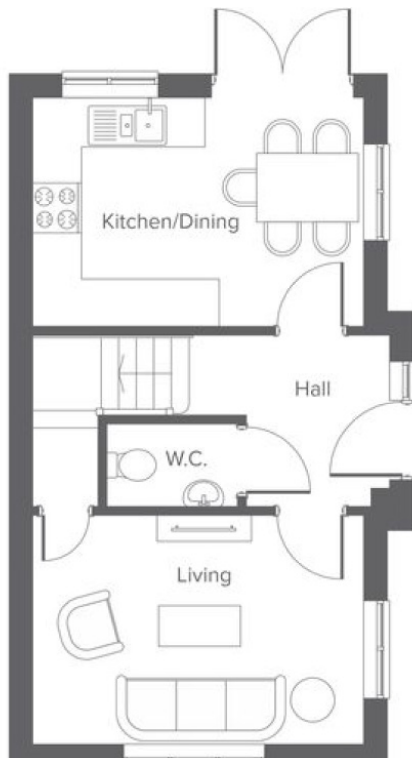
George Street, Farnworth, BL4 9QT

A collection of 106 beautifully designed new homes

The Knowl Century Mill

2-bedroom home, sleeps 4

Ground floor



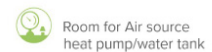
First floor



Room	Metric	Imperial
Kitchen/Dining	4.28 x 2.95	14'0" x 9'8"
Living	4.28 x 2.95	14'0" x 9'8"
W.C.	1.70 x 1.08	5'6" x 3'6"

Room	Metric	Imperial
Bedroom 1	4.28 x 2.95	14'0" x 9'8"
Bedroom 2	4.28 x 2.95	14'0" x 9'8"
Bathroom	1.77 x 2.20	5'9" x 7'2"

Total size **68.3 m² / 735.1 ft²**



Get in touch

 01204 896180

 [yourhousinggroup.co.uk](https://www.yourhousinggroup.co.uk)

 @yourhousing

 @Your_Housing

 yourhousinggroup

 yhgtv