

The Sorrel (W) Orchard View



3-bedroom home, sleeps 5

3 | 

2 | 

1 | 



Artist's impression

Key features

- Two double bedrooms
- Downstairs W.C.
- En-suite from master bedroom
- Open plan kitchen and dining room
- Separate living room
- Driveway parking



The Sorrel (W)
Available plots
Shared Ownership
41, 42
Outright Sale
6, 61, 87

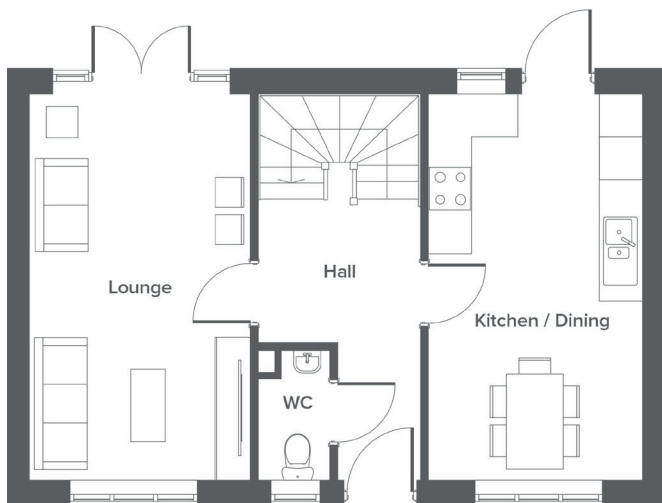
Hargreaves Road, Northwich, CW9 7BL

A selection of 2, 3 & 4-bedroom houses and one bedroom apartments

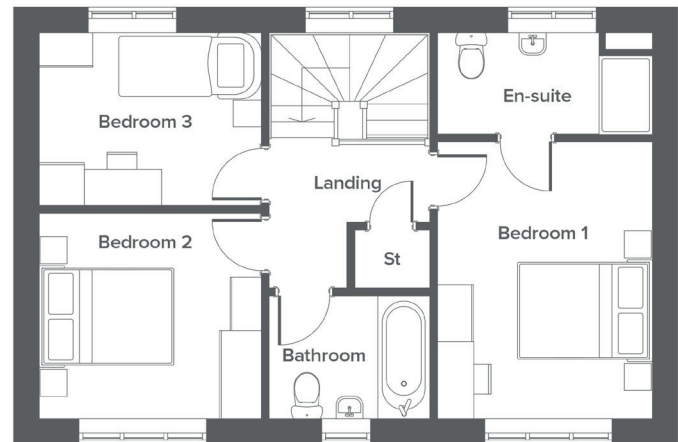
The Sorrel (W) Orchard View

3-bedroom home, sleeps 5

Ground floor



First floor



Total size **94.3 m² / 1015 ft²**

Ground Floor	Metric	Imperial
Kitchen / Dining	3.0 x 5.4	9'10" x 17'10"
Lounge	3.1 x 5.4	10'3" x 17'10"
WC	1.0 x 1.8	3'4" x 6'1"


First Floor	Metric	Imperial
Bedroom 1	3.0 x 3.9	9'11" x 12'9"
Bedroom 2	3.1 x 2.9	10'4" x 9'6"
Bedroom 3	3.1 x 2.4	10'4" x 8'1"
Bathroom	2.2 x 1.7	7'4" x 5'9"
En-suite	3.0 x 1.4	9'11" x 4'9"

Get in touch

 **01606 218072**

 **yourhousinggroup.co.uk**

 **yhgTV**

 **@yourhousing**

 **yourhousinggroup**