

The Sorrel Orchard View

3-bedroom home, sleeps 5



3 | 

2 | 

1 | 



Artist's impression

Key features

- Two double bedrooms
- Downstairs W.C.
- En-suite from master bedroom
- Open plan kitchen and dining room
- Separate living room
- Driveway parking



The Sorrel Available plots

Rent to Buy

5, 337, 362, 365, 366,

Shared Ownership

2, 55, 62, 323

Outright Sale

9, 60, 90, 332, 331,
375, 380

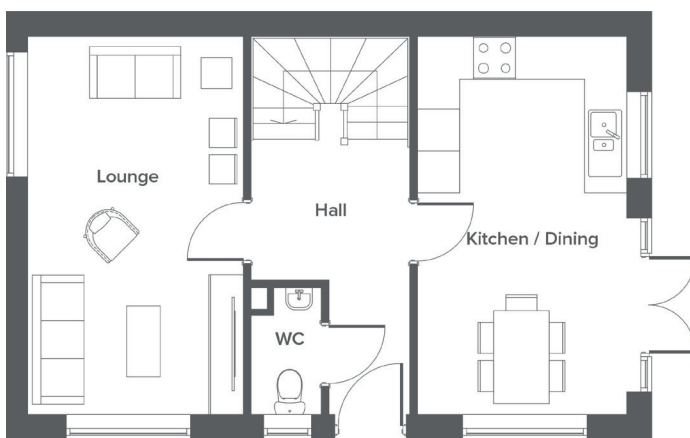
Hargreaves Road, Northwich, CW9 7BL

A selection of 2, 3 & 4-bedroom houses and one bedroom apartments

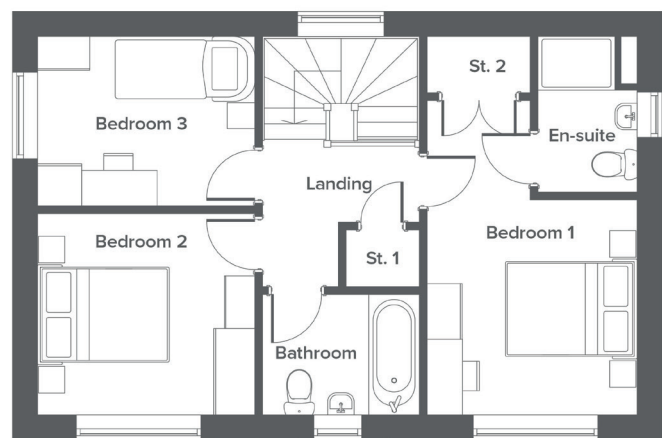
The Sorrel Orchard View

3-bedroom home, sleeps 5

Ground floor



First floor



Total size **94.3 m² / 1015 ft²**

Ground Floor	Metric	Imperial
Kitchen / Dining	3.0 x 5.4	9'10" x 17'10"
Lounge	3.1 x 5.4	10'3" x 17'10"
WC	1.0 x 1.8	3'4" x 6'1"


First Floor	Metric	Imperial
Bedroom 1	3.0 x 4.5	9'11" x 14'9"
Bedroom 2	3.1 x 2.9	10'4" x 9'6"
Bedroom 3	3.1 x 2.4	10'4" x 8'1"
Bathroom	2.2 x 1.7	7'4" x 5'9"
En-suite	1.4 x 2.2	4'7" x 7'5"

Get in touch

 **01606 218072**

 **yourhousinggroup.co.uk**

 **yhgtv**

 **@yourhousing**

 **yourhousinggroup**