

The Gerrard Waterside Point



2



1



1



Artist's impression

KEY FEATURES:

- Two double bedrooms
- Downstairs W.C
- Open-plan kitchen / diner
- Patio doors to garden
- Solar panel fitted to roof
- Electric vehicle charging point

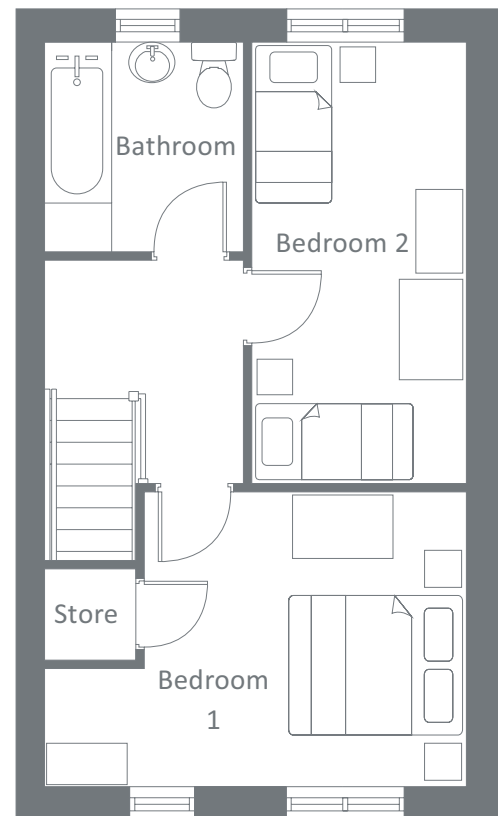
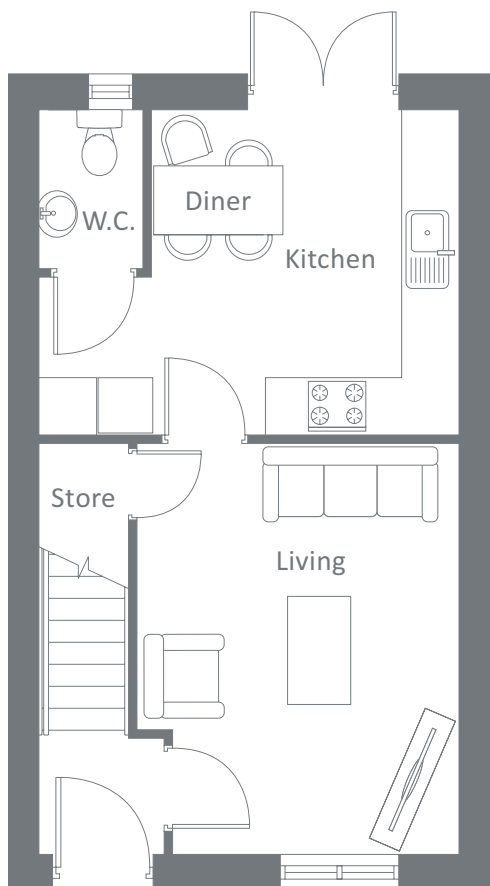


The Gerrard Plots

227, 229, 230, 231,
232

Waterside Point, West Bridgewater St, Leigh, WN7 4HB
An exciting canal-side development of 226 attractive new homes.

The Gerrard Waterside Point




Ground Floor


	Metric	Imperial
Kitchen / Diner	3.3 x 3.4	10'9" x 11'2"
Living	3.4 x 4.3	11'2" x 14'3"
W.C.	1.1 x 1.7	3'7" x 5'5"


First Floor


	Metric	Imperial
Bedroom 1	4.4 x 3.1	14'7" x 9'10"
Bedroom 2	2.3 x 4.6	7'6" x 15'0"
Bathroom	2.1 x 2.2	6'11" x 7'4"


Contact our team

 01942 419148

 yourhousinggroup.co.uk

 @yourhousinggroup

 @Your_Housing

 @yourhousing