

The Ramsdell Charnock Grove

4-bedroom home, sleeps 6



4 | 

1 | 

1 | 



Artist's impression

Key features

- Two double bedrooms
- Downstairs W.C.
- Open plan kitchen and dining room
- Separate living room
- Driveway parking

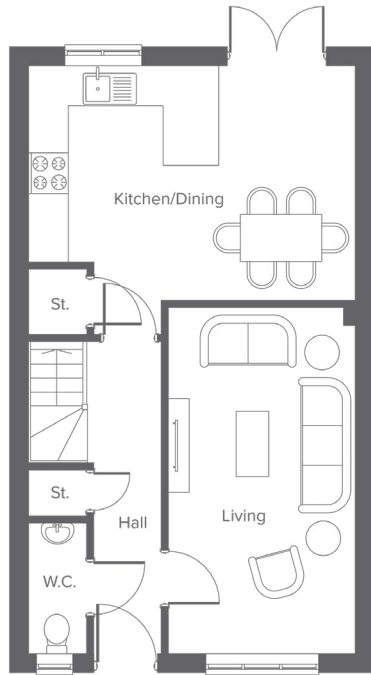


The Ramsdell
Available plots
66 or 67

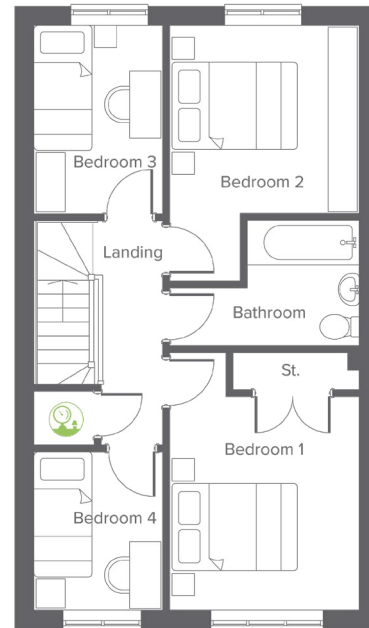
Charter Lane, Charnock Richard, PR7 5LZ
A collection of 76 beautifully designed new homes

The Ramsdell Charnock Grove

4-bedroom home, sleeps 6



Ground floor

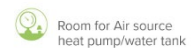


First floor

Ground Floor	Metric	Imperial
Kitchen/Dining	5.20 x 3.74	17'0" x 12'3"
Living	2.98 x 5.52	9'9" x 18'1"
W.C.	0.92 x 2.08	3'0" x 6'9"

First Floor	Metric	Imperial
Bedroom 1	3.04 x 4.13	9'11" x 13'6"
Bedroom 2	3.04 x 3.01	9'11" x 9'10"
Bedroom 3	2.05 x 3.01	6'8" x 9'10"
Bedroom 4	2.05 x 2.53	6'8" x 8'3"
Bathroom	1.79 x 2.00	5'10" x 6'6"

Total size **97.5m² / 1,050.3ft²**



Get in touch

 01257 650614

 [yourhousinggroup.co.uk](https://www.yourhousinggroup.co.uk)

 @yourhousing

 yourhousinggroup