

The Bedford Waterside Point



Artist's impression

KEY FEATURES

- One double bedroom
- Open plan living/dining area
- Electrical vehicle charging point
- Solar panels fitted to the roof of the first floor maisonettes
- Driveway parking

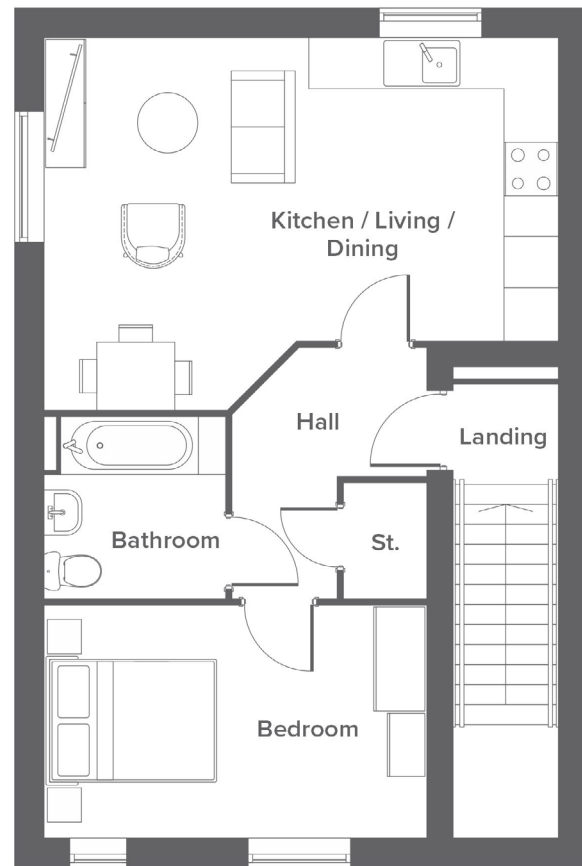
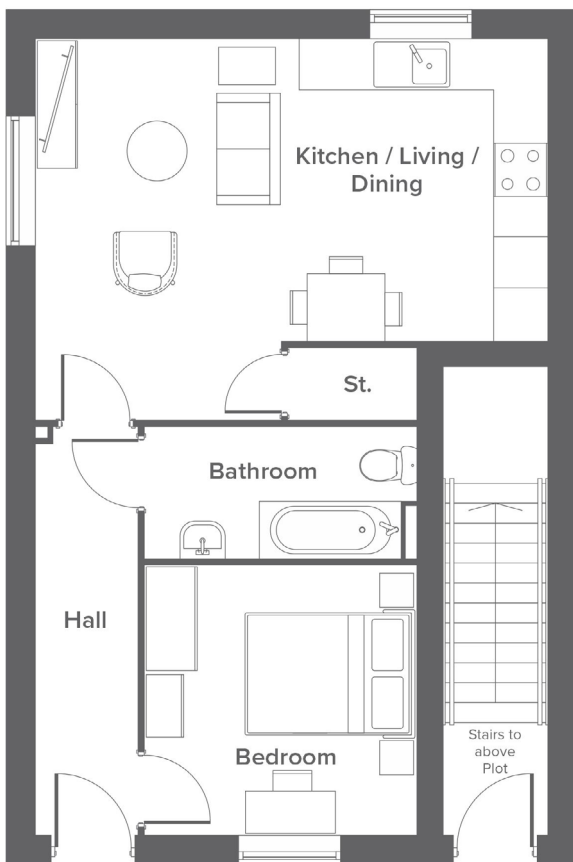


The Bedford Plots

233, 234, 235, 236

Waterside Point, West Bridgewater St, Leigh, WN7 4HB
An exciting canal-side development of 226 attractive new homes.

The Bedford Waterside Point




Ground Floor	Metric	Imperial
Kitchen/Living/Dining	6.1 x 4.6	20'1" x 15'2"
Bedroom	3.2 x 3.2	10'5" x 10'5"
Bathroom	3.2 x 1.6	10'5" x 5'3"


First Floor	Metric	Imperial
Kitchen/Living/Dining	6.1 x 4.5	20'1" x 14'9"
Bedroom	4.6 x 2.8	15'1" x 9'2"
Bathroom	2.2 x 2.2	7'2" x 7'2"


Contact our team

 01942 419148

 yourhousinggroup.co.uk

 @yourhousinggroup

 @Your_Housing

 @yourhousing