

The Clover Orchard View

3-bedroom home, sleeps 4



3 | 

2 | 

1 | 



Artist's impression

Key features

- One double bedroom
- Downstairs W.C.
- En-suite from master bedroom
- Open plan kitchen and dining room
- Separate living room
- Driveway parking



The Clover

Available plots

Shared Ownership

13, 38, 72, 73, 91, 324,
325, 333, 334, 335, 336

Outright Sale

14, 75, 76, 340, 341,
358, 359

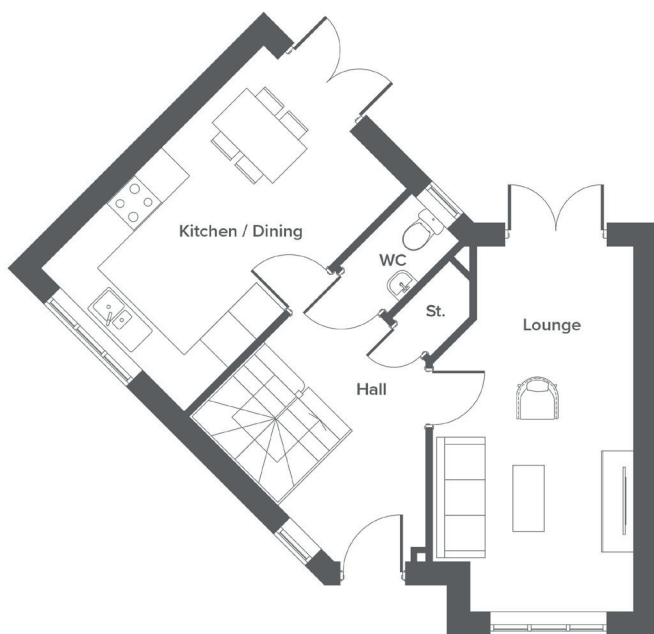
Hargreaves Road, Northwich, CW9 7BL

A selection of 2, 3 & 4-bedroom houses and one bedroom apartments

The Clover Orchard View

3-bedroom home, sleeps 4

Ground floor



First floor



| Ground Floor | Metric | Imperial |
|------------------|-----------|----------------|
| Kitchen / Dining | 3.2 x 5.0 | 10'5" x 16'4" |
| Lounge | 3.1 x 5.7 | 10'5" x 18'11" |
| WC | 1.0 x 1.6 | 3'6" x 5'5" |

| First Floor | Metric | Imperial |
|-------------|-----------|---------------|
| Bedroom 1 | 3.5 x 3.5 | 11'8" x 11'7" |
| Bedroom 2 | 3.2 x 2.1 | 10'7" x 7'0" |
| Bedroom 3 | 2.5 x 2.7 | 8'4" x 8'11" |
| Study | 2.6 x 2.1 | 8'7" x 6'11" |
| Bathroom | 1.8 x 1.7 | 6'0" x 5'9" |
| En-suite | 1.5 x 1.7 | 5'2" x 5'10" |


Total size **92.9 m² / 1000 ft²**

Get in touch

 **01606 218072**

 **yourhousinggroup.co.uk**

 **yhgtv**

 **@yourhousing**

 **yourhousinggroup**